

# PRO SERIES

## LF-7250 GENERATOR



**LIFAN**  
**POWER**  
**USA**

2205 Industrial Park Road  
Van Buren, AR  
72956

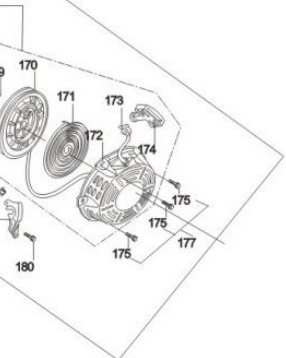
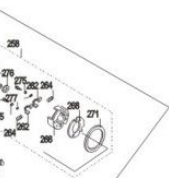
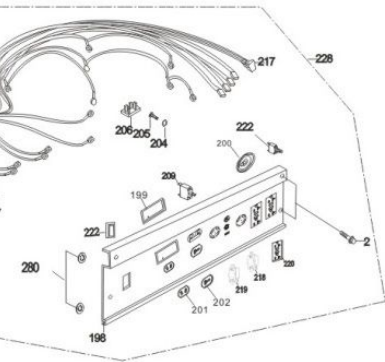
[www.lifanpowerusa.com](http://www.lifanpowerusa.com)  
(866) 471-7464



# LIFAN POWER USA

## PRO SERIES

### LF-7250 GENERATOR



S/N	Description	Qty
1	GENERAL GASOLINE ENGINE	1
2	Bolt M6×12	29
3	Cylinder head cover Assy	1
4	Gasket, cylinder head cover	1
5	Air duck	1
6	Pusher	2
7	Lock nut	2
8	Sleeve	2
9	Valve rocker	2
10	Adjusting bolt for valve gap	2
11	Valve rocker assy	2
12	Pusher guide	1
13	Bolt M8×55	4
14	Intake valve guide	1
15	Exhaust valve guide	1
16	Circip	2
17	Valve spring	2
18	Spring seat, intake valve	1
19	Spring seat, exhaust valve	1
20	Cap	1
21	Stud M8×34	2
22	Exhaust gasket	1
23	Spark plug F6TC	1
24	Support panel assy	1
25	Washer φ5	2
26	Nut M6	1
27	Lock bolt	1
28	Regulating	1
29	Back spring	1

S/N	Description	Qty
30	Fine regulating	1
31	Pulling rod	1
32	Regulating spring	1
33	Screw M5×35	1
34	Regulating control system	1
35	Set pinφ10×16	2
36	Exhaust valve	1
37	Intake valve	1
38	Gasket, cylinder head	1
39	Cylinder head Assy	1
40	Lead wind cover	1
41	Stud M6×96	2
42	Inlet gasket	1
43	Connecting block	1
44	Carburetor gasket	1
45	Choke switch	1
46	Throttle unit	1
47	Spring, mixture adjustment screw	1
48	Mixture adjustment screw	1
49	Idle adjustment screw	1
50	Choke unit	1
51	Mixture chamber body	1
52	Main nozzle	1
53	Float needle	1
54	Main jet	1
55	Float	1
56	Float chamber gasket	1
57	Float chamber	1
58	Float chamber drain Screw	1
59	Washer	2
60	Float chamber	1
61	Screw	1
62	Carburetor Assy	1
63	Air cleaner gasket	1
64	Air cleaner stay	1
65	Nut M6	2
66	Hinge	2
67	Air cleaner case	1
68	Gasket	1
69	Retainer, filter element	1
70	Filter element	1
71	Air cleaner cover	1
72	Bolt	4

S/N	Description	Qty
73	Air cleaner Assy	1
74	Drain plug	2
75	Washer	2
76	Bearing 6205	1
77	Oil seal, crankshaft	1
78	Crankcase	1
79	Regulating sway bar	1
80	Washer	2
81	Split pin	1
82	Nut M10	1
83	O-ring 13×1.4	1
84	Oil sensor	1
85	Regulating shaft	1
86	Snap ring	1
87	Washer, driven gear	1
88	Driven gear, regulator	1
89	Pin	2
90	Flying block	2
91	Washer	1
92	Sliding sleeve	1
93	Driven gear, regulator assy	1
94	Extension spring	1
95	Camshaft Assy	1
96	Tappet	2
97	Pin	1
98	Limit position panel	1
99	Woodruff key	1
100	Drive gear	1
101	Crankshaft	1
102	Timing driving gear	1
103	Crankshaft assy	1
104	Shank	1
105	Connecting rod cover	1
106	Bolt	2
107	Connecting rod	1
108	Piston pin circlip	2
109	Piston	1
110	Piston pin	1
111	Piston ring	1
112	Piston ring	1
113	Side rail	2
114	Expander	1
115	Scraper ring set	1

S/N	Description	Qty
116	Piston ring set	1
117	Gasket, crankcase	1
118	Bearing 6205	1
119	Set pin	2
120	Crankcase cover	1
121	Oil seal, crankshaft	1
122	Seal	1
123	Dipstick	1
124	Dipstick with seal	1
125	Bolt M8×32	6
126	Dust plate	1
127	Stator cover	1
128	Generator fan	1
129	Rotor comp.	1
130	Bearing 6202-2RS	1
131	Stator Assy	1
132	Generator stay	1
133	Brush Assy	1
134	Bolt M5×14	3
135	Voltage regulator	1
136	Plain washer	1
137	Bolt M8×180	1
138	Flange bolt M6×125	4
139	Generator end cover	1
140	Bolt M5×12	3
141	Supporting plate	1
142	Muffler stay	1
143	Flange bolt M8×16	3
144	Flange bolt M6×14	2
145	Muffler	1
146	Muffler guard	1
147	Muffler gasket	1
148	Exhaust pipe comp.	1
149	Bolt M8×25	2
150	Nut M8	2
151	Muffler Assy	1
152	Flywheel	1
153	Ignition coil	1
154	Screw M6×25	2
155	Engine stop cable	1
156	Ignition coil	1
157	Spark plug cap	1
158	Ignition coil assy	1

S/N	Description	Qty
159	Flywheel	1
160	Flywheel fan	1
161	Starting flange	1
162	Nut M14×1.5	1
163	Diode	1
164	Fan hood assy	1
165	Set screw	1
166	Spring lid	1
167	Friction spring	1
168	Ratchet	2
169	Ratchet spring	2
170	Starter rolls	1
171	Spiral spring	1
172	Casing	1
173	Rope	1
174	Pulling handle	1
175	Bolt M6×8	3
176	Recoil starter	1
177	Recoil starter assy	1
178	Plastic clip	1
179	Crankcase side plate assy	1
180	Bolt M6×22	1
181	Fuel tank	1
182	Fuel filler cap comp.	1
183	Carbon canister	1
184	Fuel filter	1
185	Fuel sensor	1
186	Screw M5×10	2
187	Flange bolt M6×22	4
188	Washer	4
189	Cushion	4
190	Outlet pipe $\phi 9 \times \phi 4.5 \times 130$	1
191	Tube clip	3
192	Fuel cock	1
193	Fitting brush, fuel tank	4
194	Gasket, fuel sensor	1
195	Stripe, fuel tank	1
198	Control panel	1
199	Timer	1
200	Voltage switch	1
201	V socket	1
202	T socket	1
204	Spring washer x 4	1



S/N	Description	Qty
205	Screw M4×10	1
206	Bridge Rectifier 20A,800V	1
209	Circuit protector	1
216	Boot, switch wire	1
217	Connector	3
218	Consent 20A	1
219	Consent 30A	1
220	Consent 20A	2
221	Wire clamp	2
222	Ignition switch	3
224	Control panel case	1
225	Boot, AC output wire	1
228	Control panel Assy	1
229	Frame comp	1
230	Bottom rubber A	2
231	Bottom rubber B	2
232	Flange nut M8	16
233	Flat washer x8	4
234	Spring washer x8	4
235	Bolt M6×12	4
236	Backstop	2
237	shock pad 52×40×23	2
238	Flat washer x6	2
239	Spring washer x6	2
240	Bolt M6×16	2
241	Head beam	2
242	Bolt M8×40	2
243	Cushion φ8.5	4
244	Road wheel	2
245	Wheel axle	1
246	Cotter pin φ4×25	2
247	Bolt M8×60	1
248	Rubber pad, frame	1
249	Grommet	1
250	protective covering(1)	1
252	Charge coil	1
253	Clamper, cord	1
254	Bolt M6×35	2
255	Relay, start-up	1
256	Rotor comp.	1
257	Starting clutch	1
258	Starting motor Assy	1
259	Base, starting	1

S/N	Description	Qty
260	Housing, starting clutch	1
261	Driven gear	1
262	Brush comp.	4
263	Stator Assy	1
264	Spring, brush	4
265	Reducing gear	1
266	Stay, brush	1
267	Cable, starting motor	1
268	Insulator	1
269	Bolt M5×14	2
270	Screw M4×6	1
271	Packing ring	1
272	Screw M5×32	4
273	Nut M6	2
274	Bolt M6×35	2
275	Spring washer 4mm	3
276	Screw M4×14	2
277	Washer 4mm	2
278	Set pin 8×14	2
279	locknut M5	2
280	locknut M6	8
281	Air outlet joint	1
282	Ventilation tube	1
283	Pipe clamp 10mm-14mm	1

**LIFAN**  
**POWER**  
**USA**

2205 Industrial Park Road  
Van Buren, AR  
72956

www.lifanpowerusa.com  
(866) 471-7464